



MFES8030R

**30-INCH WIDE ELECTRIC RANGE WITH
GRILL MODE - 5.3 CU. FT.**

Dimensions: h: 47.875" w: 29.875" d: 28"

Colors:  Fingerprint Resistant Stainless Steel



START THE CONVERSATION

Are you looking to get great grilled flavor from the convenience of your kitchen?

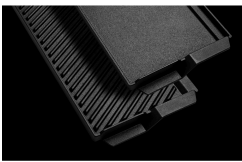
TOP FEATURES



1

GRILL MODE

Get the perfect sear all year with Grill Mode



2

REVERSIBLE CAST IRON GRILL/GRIDDLE

Get more out of your range with Reversible Cast Iron Grill/Griddle



3

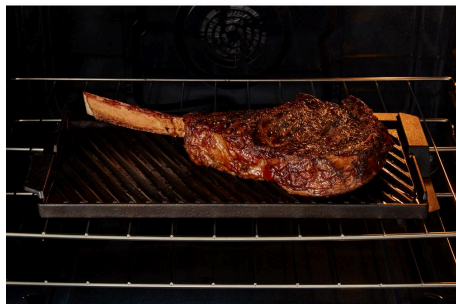
NO PREHEAT AIR FRY

Enjoy crispy, golden results without the wait with No Preheat Air Fry

DID YOU KNOW?

Our max temperature is 550F. After preheating the oven and the reversible cast iron grill/griddle accessory, a consumer can get a delicious charred grill taste and make burgers in 6 minutes, veggies in 10 minutes, and shrimp skewers in 4 minutes.

HOW TO DEMONSTRATE



GRILL MODE

Open the oven door and insert the grill accessory into the oven, showing your customer how it locks into place on the rack. Tell them how the delicious grill taste can come right from your kitchen, extending grilling season to all year, so you can get the perfect sear all year.

ADDITIONAL PRODUCTS TO CONSIDER

Be sure to tune into your customers' shopping priorities to bundle products across categories



ALSO AVAILABLE / STEP UP
[MFGS8030R](#)



SUITE MATCH COOKING RANGE / WALL OVEN
[MFI2570FE](#)



SUITE MATCH DISHWASHER
[MDB8959SK](#)